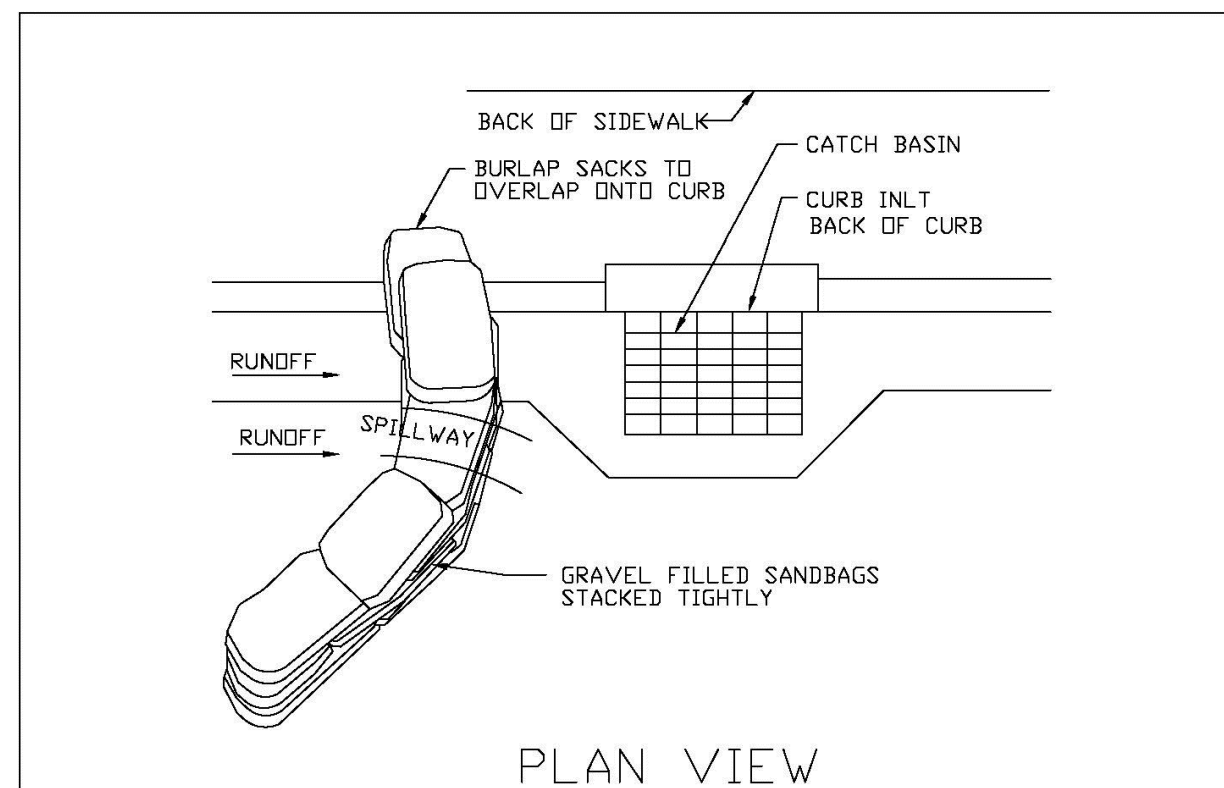


1. PLACE CURB TYPE SEDIMENT BARRIERS ON GENTLY SLOPING STREET SEGEMENTS, WHERE WATER CAN POND AND ALLOW SEDIMENT TO SEPARATE FROM RUNOFF.
2. SANDBAGS, OF EITHER BURLAP OR WOVEN GEOTEXTILE FABRIC, ARE FILLED WITH GRAVEL, LAYERED AND GAPPED TIGHTLY.
3. LEAVE ONE SANDBAG GAP IN THE TOP ROW TO PROVIDE A SPILLWAY FOR OVERFLOW.
4. INSPECT BARRIERS AND REMOVE SEDIMENT AFTER EACH STORM EVENT. SEDIMENT AND GRAVEL MUST BE REMOVED FROM THE TRAVELED WAY IMMEDIATELY.

CURB INLET SEDIMENT BARRIER

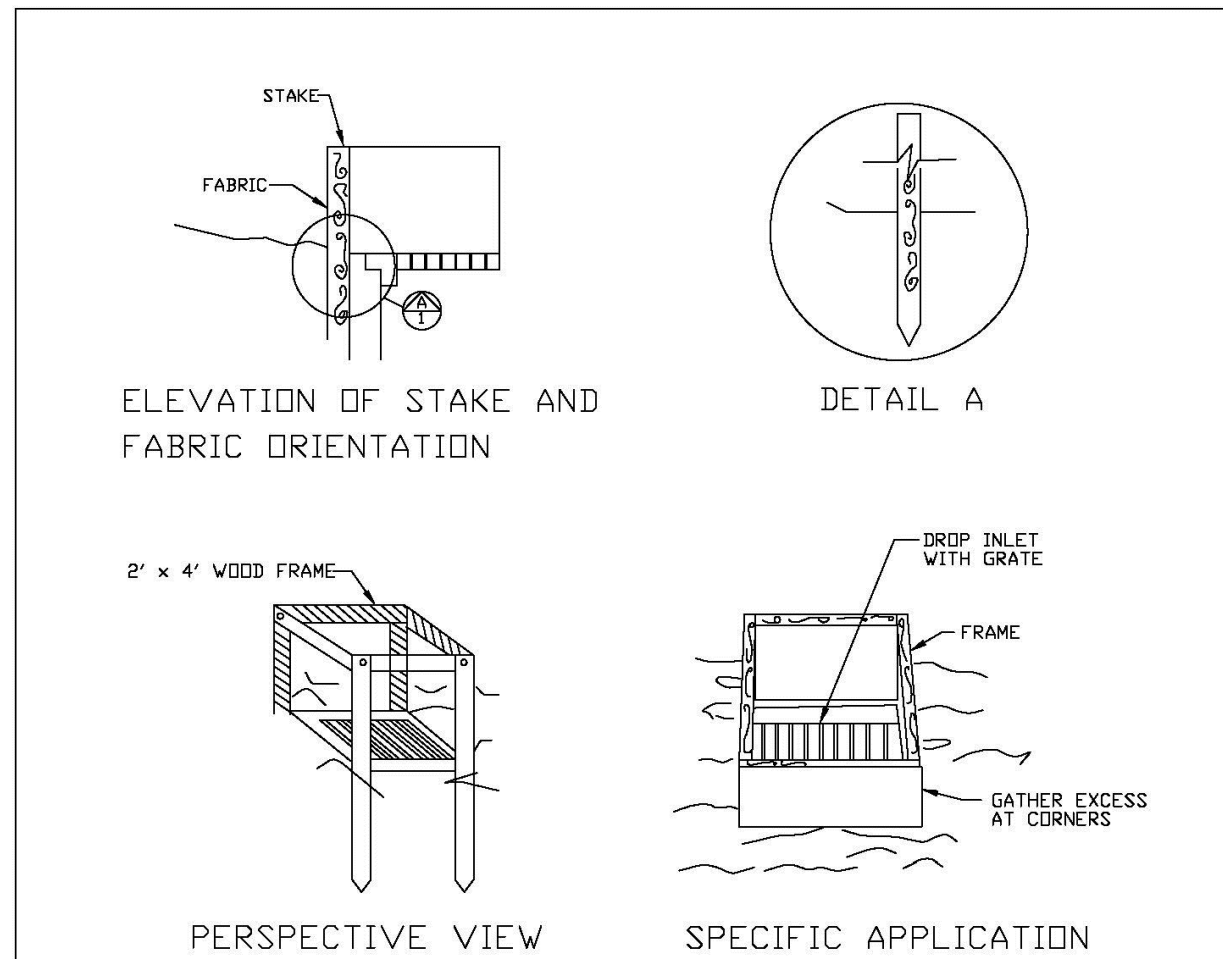
ENGINEERING STANDARDS 2025			
REVISIONS		ENGINEERING DIVISION CITY OF POMPANO BEACH	CURB INLET SEDIMENT BARRIER
BY	DATE		
SCALE: N.T.S.		DATE: MAY 2022 DWG. NO. 507-1	



- NOTES:
1. PLACE CURB TYPE SEDIMENT BARRIERS ON GENTLY SLOPING STREET SEGMENTS, WHERE
 2. WATER CAN POND AND ALLOW SEDIMENT TO SEPARATE FROM RUNOFF.
- SANDBAGS OF EITHER BURLAP OR WOVEN GEOTEXTILE FABRIC ARE FILLED WITH GRAVEL.
3. LAYERED AND PACKED TIGHTLY.
 4. LEAVE A ONE SANDBAG GAP IN THE TOP ROW TO PROVIDE A SPILLWAY FOR OVERFLOW.
- INSPECT BARRIERS AND REMOVE SEDIMENT AFTER EACH STORM EVENT. SEDIMENT AND GRAVEL MUST BE REMOVED FROM THE TRAVELED WAY IMMEDIATELY.

CURB AND GUTTER SEDIMENT BARRIER

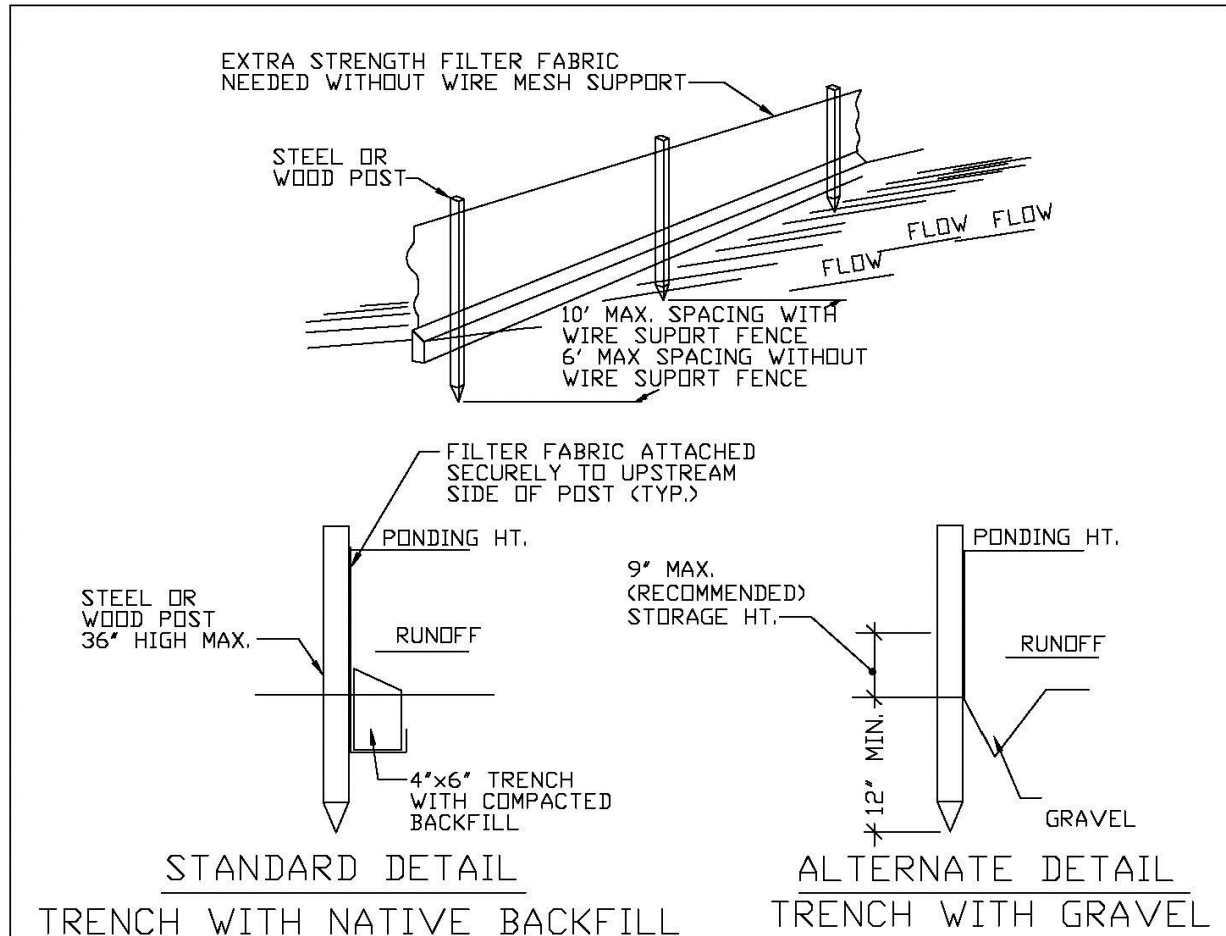
ENGINEERING STANDARDS 2025			
REVISIONS		ENGINEERING DIVISION CITY OF POMPANO BEACH	CURB AND GUTTER SEDIMENT BARRIER
BY	DATE		
SCALE: N.T.S.		DATE: MAY 2022	DWG. NO. 507-2



THIS METHOD OF INLET PROTECTION IS APPLICABLE WHERE THE INLET DRAINS A RELATIVELY FLAT AREA (SLOPE NO GREATER THAN 5%) WHERE THE INLET SHEET OR OVERLAND FLOWS (NOT EXCEEDING 1 C.F.S.) ARE TYPICAL. THE METHOD SHALL NOT APPLY TO INLETS RECEIVING CONCENTRATED FLOWS, SUCH AS IN STREET OR HIGHWAY MEDIANS

FILTER FABRIC
DROP INLET SEDIMENT FILTER

ENGINEERING STANDARDS 2025				
REVISIONS		ENGINEERING DIVISION CITY OF POMPANO BEACH	FILTER FABRIC DROP INLET SEDIMENT FILTER	
BY	DATE			
SCALE: N.T.S.			DATE: MAY 2022 DWG. NO.	508-1

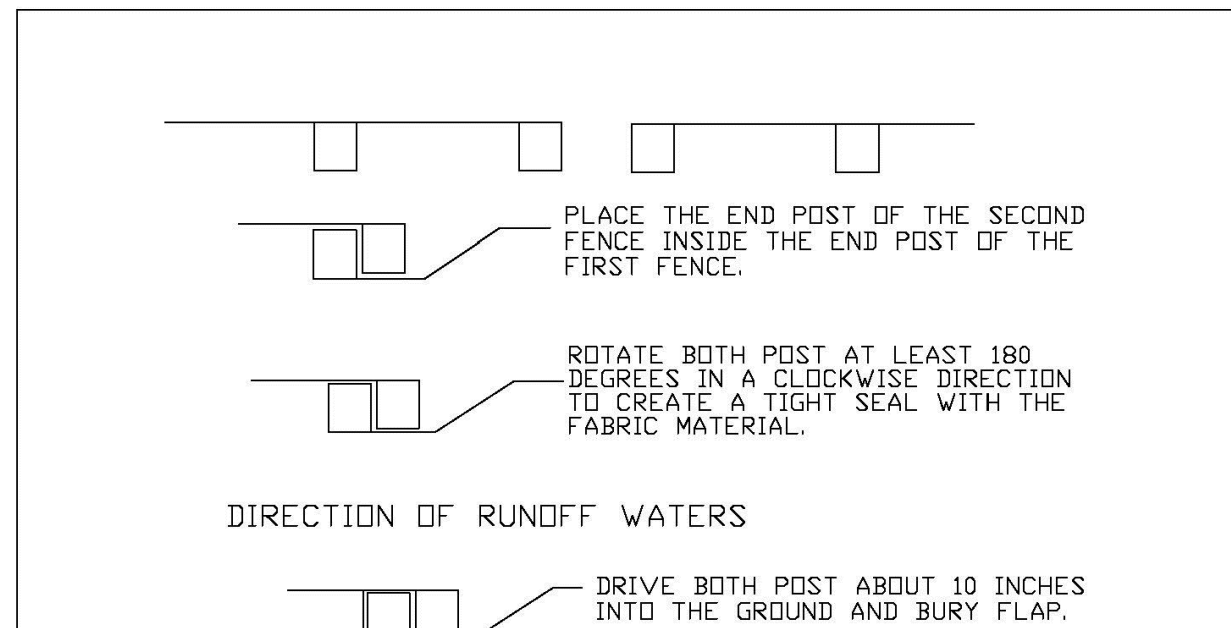


SILT FENCE

EROSION CONTROL GENERAL NOTES

1. SILT FENCE AND TURBIDITY BARRIERS MUST REMAIN IN PLACE AND BE MAINTAINED AT ALL LOCATIONS SHOWN IN THE DRAWINGS UNTIL CONSTRUCTION IS COMPLETED.
2. THE CONTRACTOR SHALL SUBMIT SCHEDULE FOR THE INSTALLATION, INSPECTION AND MAINTENANCE OF THE EROSION CONTROL FEATURES AS SHOWN IN THE DRAWINGS OR AS DIRECTED BY THE DESIGN ENGINEER. THE SCHEDULE SHALL SPECIFICALLY IDENTIFY THE SCHEDULE FOR THE INSTALLATION, MAINTENANCE AND INSPECTION OPERATIONS, AND WHEN THE EROSION CONTROL FEATURE WILL BE INSTALLED, INSPECTED, AND MAINTAINED. IT SHALL ALSO INCLUDE METHODS TO PREVENT POLLUTION OF STREAM, LAKES, TIDAL WATERS, CANALS, AND IMPOUNDMENTS. ESTABLISHED.

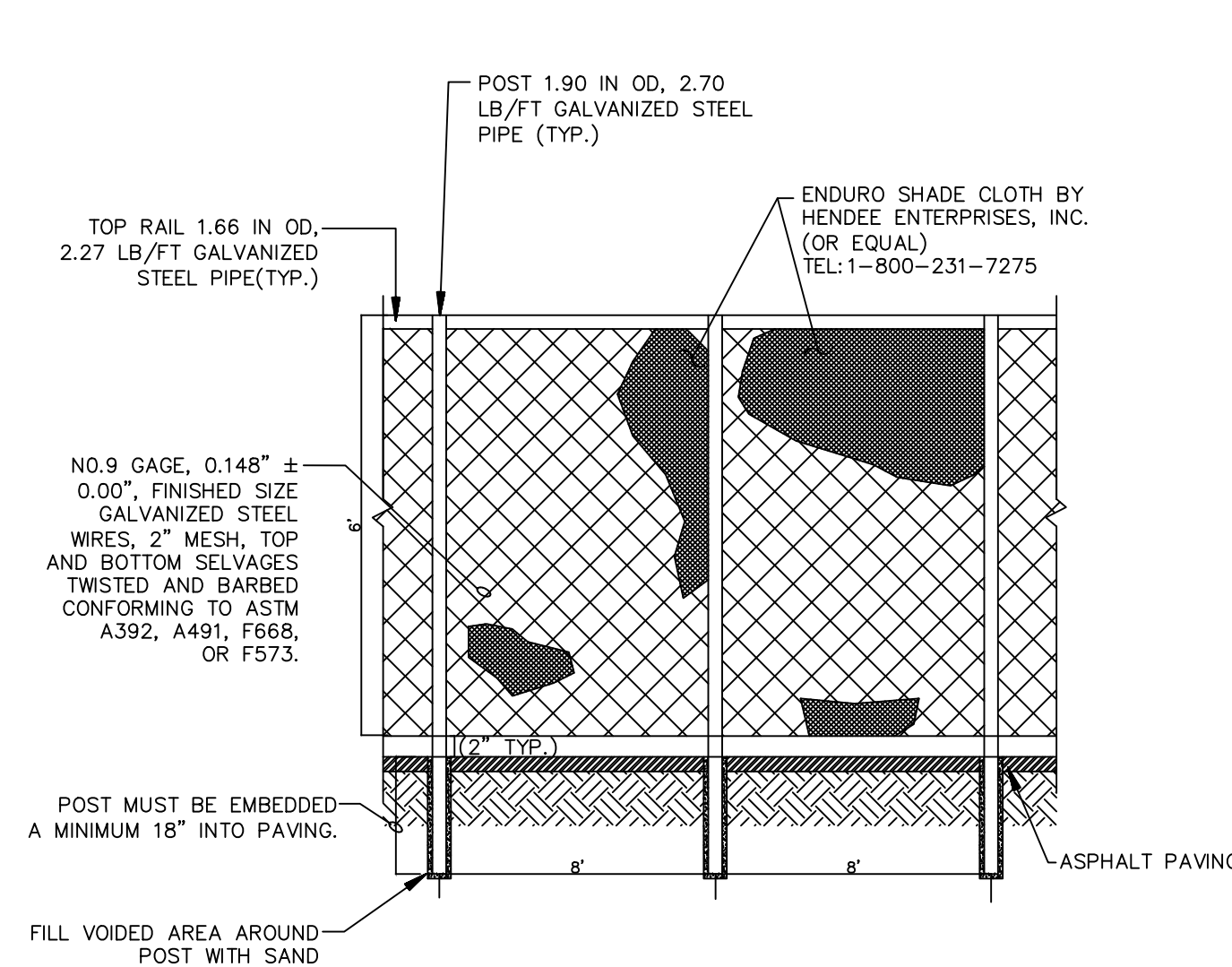
ENGINEERING STANDARDS 2025		
REVISIONS		SILT FENCE
BY	DATE	
		<div> <div>ENGINEERING DIVISION</div> <div>CITY OF POMPANO BEACH</div> <div>SCALE: N.T.S.</div> </div> <div> <div>DATE: MAY 2022</div> <div>DWG. NO.</div> <div>509-1</div> </div>



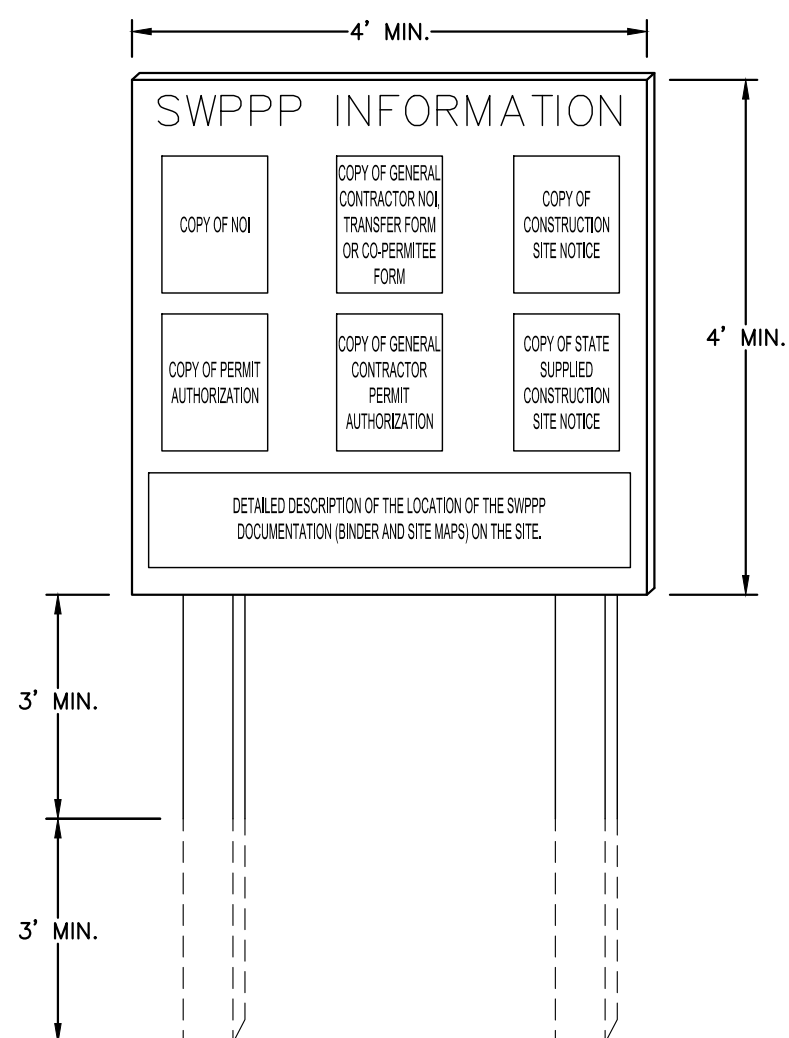
- NOTES:
1. INSPECT AND REPAIR FENCE AFTER EACH STORM EVENT AND REMOVE SEDIMENT WHEN NECESSARY.
 2. REMOVED SEDIMENT SHALL BE DEPOSITED TO AN AREA THAT WILL NOT CONTRIBUTE SEDIMENT OFF-SITE AND CAN BE PERMANENTLY STABILIZED.
 3. SILT FENCE SHALL BE PLACED ON SLOPE CONTOURS TO MAXIMIZE PONDING EFFICIENCY.

ATTACHING TWO SILT FENCES

ENGINEERING STANDARDS 2025			
REVISIONS		ENGINEERING DIVISION CITY OF POMPAÑO BEACH	ATTACHING TWO SILT FENCES
BY	DATE		
		SCALE: N.T.S.	DATE: MAY 2022
			DWG. NO.
			509-2

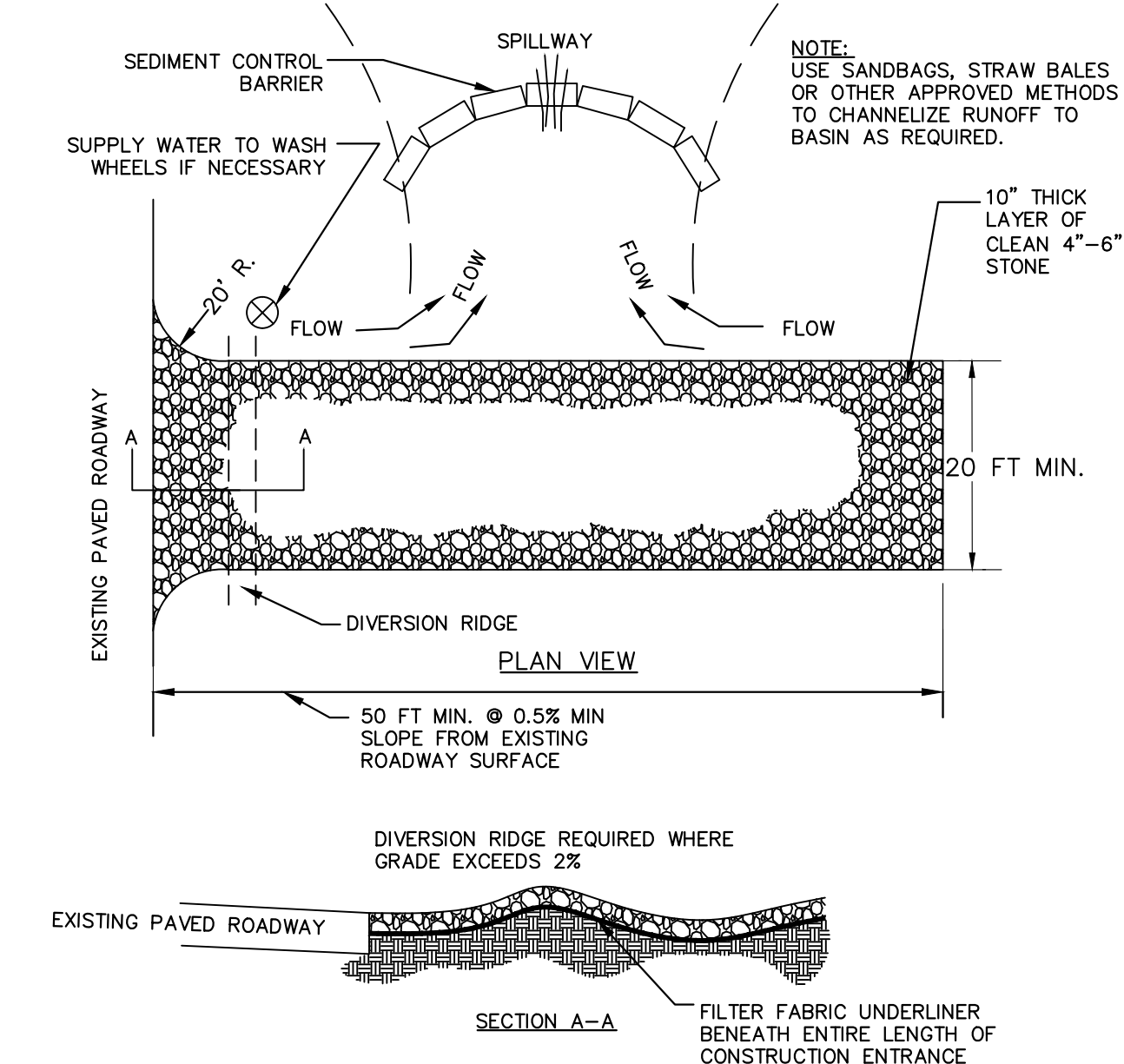


**1 6' CHAIN LINK CONSTRUCTION
FENCE WITH VISUAL DUST SCREEN
N.T.S.**



- NOTES:
1. "SWPPP INFORMATION" MUST BE DISPLAYED PROMINENTLY ACROSS THE TOP OF THE SIGN, AS SHOWN IN THE ATTACHED PHOTO. IT SHALL BE CONSTRUCTED OF A RIGID MATERIAL, SUCH AS PLYWOOD OR OUTDOOR SIGN MATERIAL, AND BE MAINTAINED IN A MANNER TO PROTECT DOCUMENTS FROM DAMAGE DUE TO WEATHER (WIND, SUN, MOISTURE, ETC.).
 2. THE SWPPP INFORMATION SIGN SHALL BE LOCATED NEAR THE ENTRANCE/EXIT OF THE SITE, SUCH THAT IT IS ACCESSIBLE/VISIBLE BY THE GENERAL PUBLIC, WITHOUT OBSTRUCTING VIEWS AS TO CAUSE A SAFETY HAZARD.
 3. ALL POSTED DOCUMENTS MUST BE MAINTAINED IN A CLEAN, READABLE CONDITION AT ALL TIMES THROUGHOUT CONSTRUCTION AND UNTIL THE NOTICE-OF-TERMINATION (NOT) IS FILED FOR THE PROJECT.
 4. CONTRACTOR SHALL POST OTHER STORM WATER AND/OR EROSION AND SEDIMENT CONTROL RELATED PERMITS ON THE SIGN AS REQUIRED BY THE LOCAL AGENCY.
 5. SIGN SHALL BE LOCATED OUTSIDE OF PUBLIC RIGHT-OF-WAY AND EASEMENTS UNLESS APPROVED BY THE GOVERNING AGENCY.
 6. CONTRACTOR IS RESPONSIBLE FOR ENSURING ACCURACY OF THIS SWPPP INFORMATION SIGN.

2 SWPP INFORMATION SIGN
N.T.S.



- NOTES:

1. THE ENTRANCE SHALL BE MAINTAINED IN A CONDITION THAT WILL PREVENT TRACKING OR FLOWING OF SEDIMENT ONTO PUBLIC RIGHTS-OF-WAY. THIS MAY REQUIRE TOP DRESSING, REPAIR AND/OR CLEANOUT OF ANY MEASURES USED TO TRAP SEDIMENT.
2. WHEN NECESSARY, WHEELS SHALL BE CLEANED PRIOR TO ENTRANCE ONTO PUBLIC RIGHT-OF-WAY.
3. WHEN WASHING IS REQUIRED, IT SHALL BE DONE ON AN AREA STABILIZED WITH CRUSHED STONE THAT DRAINS INTO AN APPROVED SEDIMENT TRAP OR SEDIMENT BASIN.

3 STABILIZED CONSTRUCTION ENTRANCE
N.T.S.

THIS ITEM HAS BEEN DIGITALLY SIGNED
AND SEALED BY GEORGE BALABAN, P.E.
ON THE DATE ADJACENT TO THE SEAL.

SIGNATURE MUST BE VERIFIED ON ANY
ELECTRONIC COPIES.

THE PRESENCE OF GROUNDWATER SHOULD BE ANTICIPATED. CONTRACTOR'S BID SHALL INCLUDE CONSIDERATION FOR ADDRESSING THIS ISSUE AND OBTAINING ALL NECESSARY PERMITS.

ALL ELEVATIONS SHOWN ON THESE PLANS ARE
BASED ON THE NAVD 88. TO CONVERT THE
ELEVATION HEREON TO NGVD 29 ADD 1.51
FEET.



KNOW WHAT'S BELOW
ALWAYS CALL 811
BEFORE YOU DIG

It's fast. It's free. It's the law.

www.callsunshine.com

